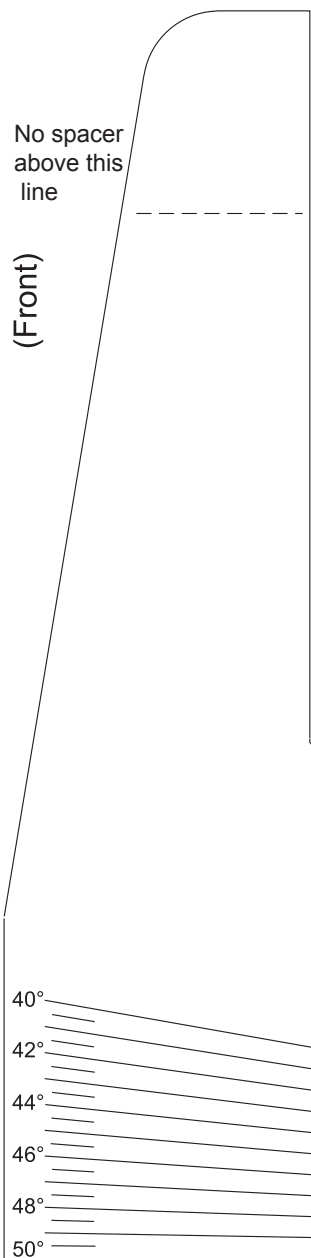


Multi-Dial Support 50° (US Northern Version)

(Designed by Tony Moss B.Sc. D.L.C. 2014)



No spacer above this line

(Front)

1.2" (30.5mm)
50°

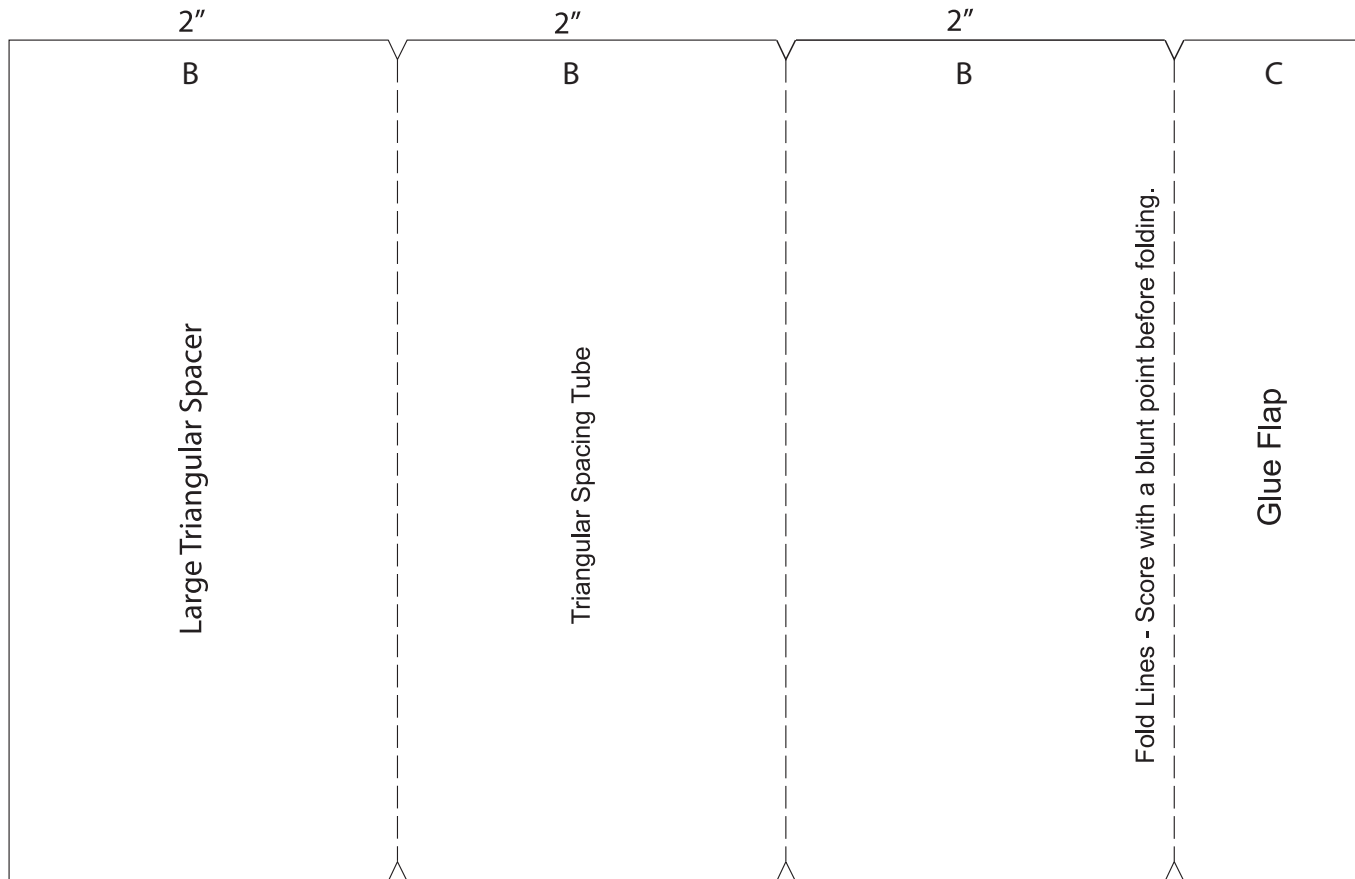
Make extra spacers to fit the supports for your latitude by varying dimensions B & C.

4.3"

This critical dimension assumes the dial is made from cereal packet card approx' 1mm thick.

No spacer this side of line.

Vee notches are templet for additional spacers.



2"

B

Large Triangular Spacer

2"

B

Triangular Spacing Tube

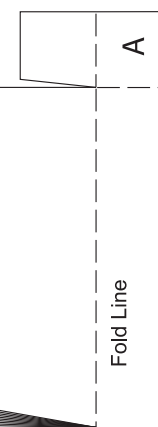
2"

B

C

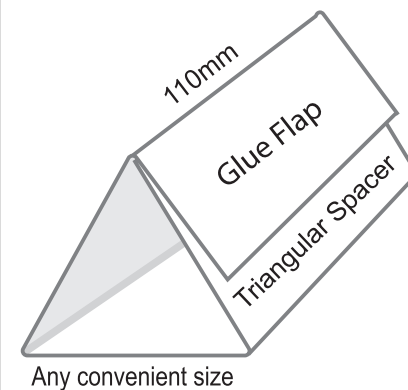
Glue Flap

Fold Lines - Score with a blunt point before folding.



Fold Line

A



110mm

Glue Flap

Triangular Spacer

Any convenient size